

Coming soon.....



Clasper Towers

How has the park developed?

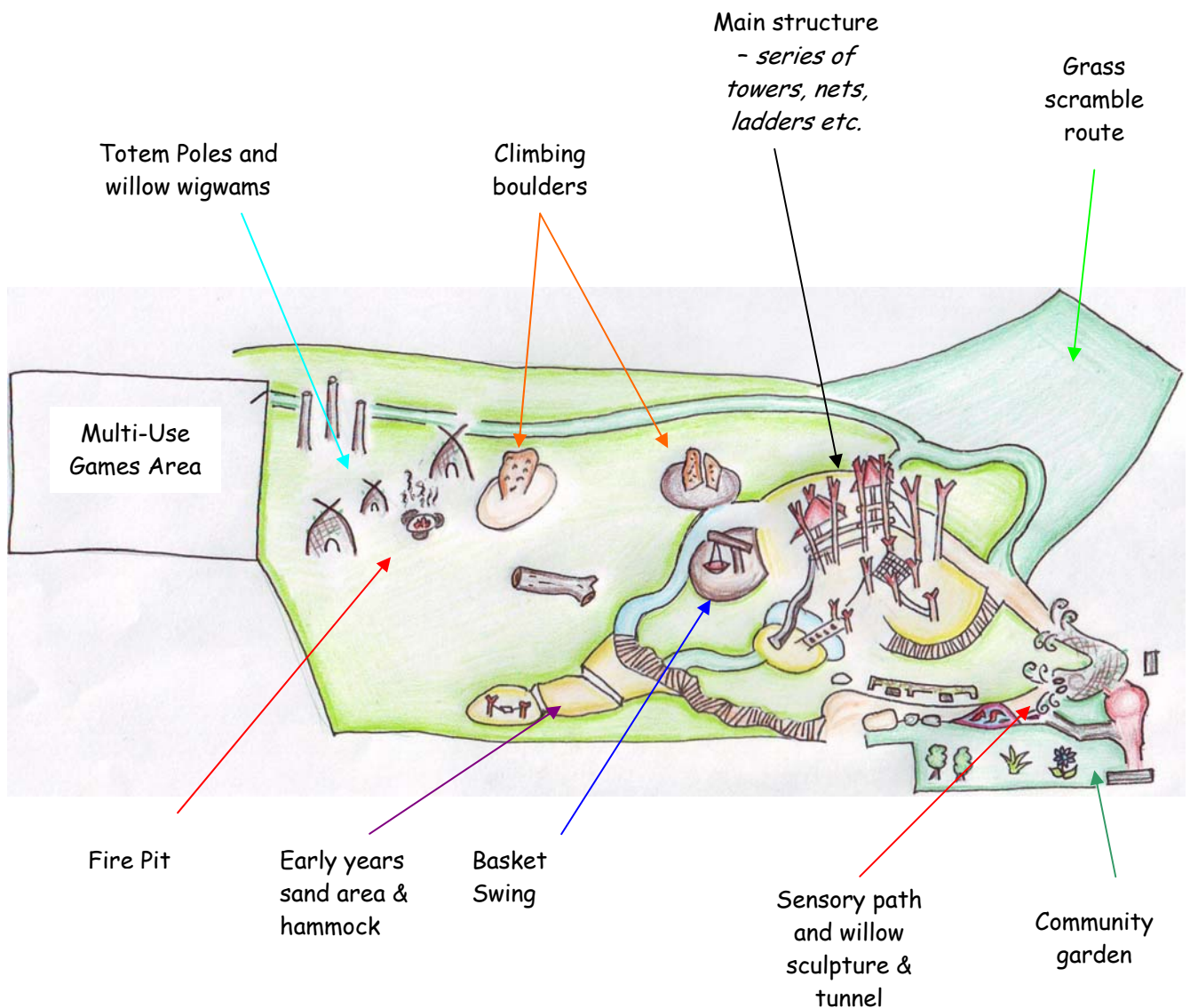
As part of the consultation with children, families and communities for the Gateshead play strategy 2007 - 2010, '*adventurous outdoor play opportunities*' were identified as a priority in Gateshead. It is clear that increasingly in our community today; possibly due to a fear of litigation and a growing 'blame culture', society is trying to remove the risk element to many play opportunities for children and young people. This can however, be to the detriment of the development of children and young people, who, in learning to manage their own risks within a play environment gain essential skills which they can transfer to other areas of their life.

Money has been awarded, primarily through the Big Lottery Fund, but also from other sources, including the Youth Capital Fund, to build Gateshead's Adventure Playground. Throughout the process children and young people have been embedded in the decision making process. Children and young people sat on a panel for the Big Lottery Fund to decide where the money was spent, local children chose the style and type of equipment they would like and wrote the bid to the youth capital fund to gain funding for the 'youth area'. As the development of the park presses on, it is our mission to ensure children and young people are at the heart of the process and they will now be involved in the design and delivery of programmes in the park, take ownership of the park and associated projects, and really ensure that themselves and other children can reap the benefits of the park.



What is Clasper Towers?

Clasper Towers is an open access park and will be open to the public from 9am until 9pm. The adventure Playground will provide freeplay, adventurous and challenging play to the general public free of charge. The Clasper Towers staff team will provide a qualified service to schools, youth, and other community groups which will incorporate the adventure playground, risky play and an abundance of outdoor learning experiences into their programmes of work and curriculums.



How do I find a programme to suit our group?

Whatever you require for your group, we aim to be able to accommodate, whether it is a one off event for fun, or a term long programme of work.

Here are some examples of what we can provide:

- *End of term/year treat* - this can be based around a current learning theme or something from popular culture. E.g. 'I'm in year 4... Get me out of here!!!' you can choose from a menu of several fun activities which will be adapted to suit the theme.
- *Curriculum focussed work* - Use the park as a one off or run a series of lessons here to fulfil your outdoor learning manifesto. Our staff hold a forest schools qualification and can deliver curriculum based activities from a huge range of subjects.
- *Outdoor classroom* - Book an area of the park to deliver your own lessons. Staff can ensure the area is booked out and provide additional supervision
- *Transition* - Use the park to facilitate your transition events. Use our staff to facilitate a transition day where children can take part in activities around: hopes and fears, teambuilding, personal achievement etc.
- *Staff training* - Hold a staff training day here... why not come here to do some team building, or training around outdoor learning?
- **YOU TELL US!!!!** - is there something else you would like to do? - You tell us and we will do our best to accommodate.

As the park is still in its infancy we would like to take the time to develop our programme of activities to suit our client's needs. On this basis, early bookings will be tailor made to suit, and in the long term we can develop a comprehensive bank of activities which can be pieced together to form individual programmes or one off events.

The wealth of experience of our staff means that you can come to us with an idea or a piece of the curriculum and we will develop a stimulating, challenging and fun outdoor experience.... All queries welcome!! We relish the challenge!!

How do I make a booking?

The staff team can organise everything for you!! From the moment you make a query, they will collect information from you and then work to ensure they can meet your objectives and learning outcomes. A programme of work will be tailored specifically to accommodate your children and their needs and prepare any additional resources required. Amongst the team, we have an education officer who will come and visit your school or group, show you the park plans and explain what we can provide and discuss your specific requirements.

Upon commencement of your event or programme of work, there is a qualified staff team trained in outdoor learning and play, ready to deliver the sessions in an inspiring way which, coupled with the environment, will be sure to get children excited about what they are learning. As part of the service, if required, the team can then provide follow up work and evaluation sessions within your facility.

Price

Pricing will depend on the programme chosen and amount of children attending. Initially prices will be offered at an introductory rate.

For more information or to make a booking, please contact:

The Tyne View Centre on 0191 4335100

